

Super Scan

Once again keeping pace with advance technology in Radiology

Introduces

TOSHIBA

PRIME
Aquilion

160 Slice

Dual Energy CT Scan



SUPER SCANTM
Imaging Centres

3T MRI | 160 Slice Dual Energy CT Scan | Hi-End Sonography | 3D-4D | Doppler
Digital X-Ray | IITV | OPG | Mammography | Interventional Radiology

The Most Advanced Private Imaging Centre in ENTIRE GUJARAT


PRIME *Aquilion* 160 Slice Dual Energy CT Scan

NEW STANDARD FOR THE FUTURE !!

Aquilion PRIME incorporates cutting-edge technologies designed to meet your current and future clinical needs.

Innovative features ensure that high-quality images for best possible diagnosis and maximum patient comfort are routinely acquired with lowest possible patient dose.

ADVANTAGES OF 160 SLICE DUAL ENERGY CT SCAN

- **0.5mm thinnest possible Detector** among any other CT manufacturer gives Ultra Sharp Clear Images
- **Dual Energy mode** gives exact characterisation of a structure.
- **0.28 seconds scan time (43% faster** than conventional 128 slice CT scanner)
esp. useful for Trauma patients, ICU & Critical patients, Paediatrics and Angiography studies.
Fastest scan time gives best and sharp images without movement.
- **Widest gantry bore** of 78 cms providing maximum patient comfort & particularly useful for obese patients and CT guided interventions.
- **CT couch capacity** of 205 kgs ensuring CT studies for obese patients also.
-  **AIDR 3D** for lowest radiation and safer imaging.



ADVANCED APPLICATIONS OF 160 SLICE DUAL ENERGY CT SCAN

Dual Energy

Dual Energy scans provide advanced tissue characterization and multienergy viewing, iodine mapping & subtraction. Applications include -

- **Renal Stone Analysis e.g. calcium, uric or struvite stones.**
- **Pulmonary perfusion & ventilation imaging.**
- **Iodine colour maps to determine enhancement of focal lesions in liver/kidneys etc.**
- **Differentiation of tendons & ligaments.**

Whole Body Perfusion

Analyses the blood perfusion of an organ.

Identifies perfusion deficit in the lungs caused by acute / chronic pulmonary embolic disease.

Provides brain perfusion maps showing acute infarcts.

Perfusion maps provide additional information for the diagnosis, treatment & follow up of a lesion.

Lung Volume Analysis

To identify & quantify Pulmonary Emphysema.

^{Sure} Cardio Prospective

For ultrafast coronary angiography - 2 beat Angiogram!!

Includes arrhythmia rejection software which rejects irregular heartbeats and gives perfect diagnostic angiogram.

Cardiac Functional Analysis

Liver Segmentation for Tumor Resection Planning

Fat Index View

Calculation of the ratio of visceral to subcutaneous fat as a prognostic indicator of the risk of metabolic syndrome. Useful in pre-evaluation for obesity surgery.

Oncology Evaluation by Recist Criteria - International Standard for Cancer Patient Follow-up

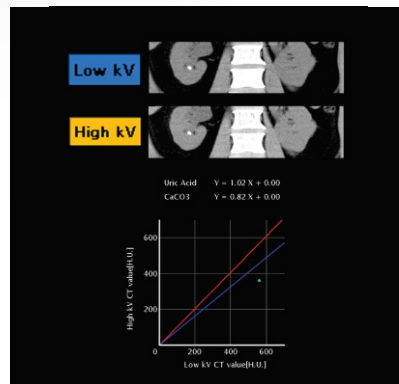
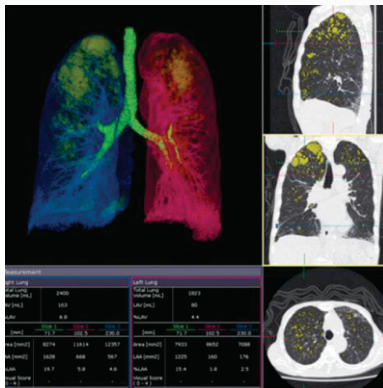
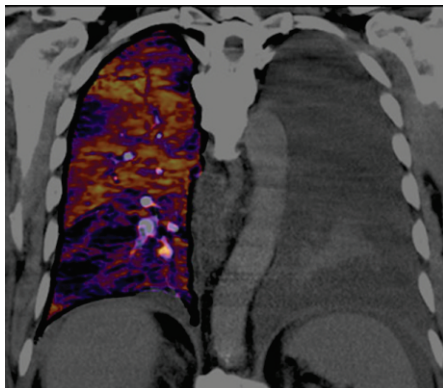
Kinematic "4 Dimensional" CT imaging of small joints

Chest & Abdomen



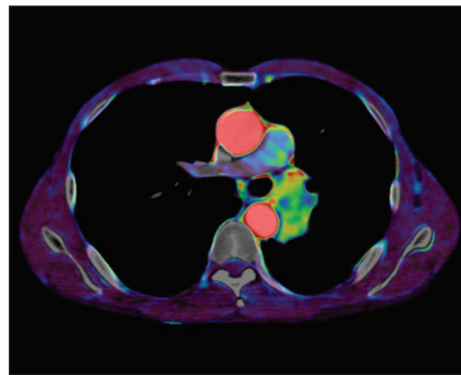
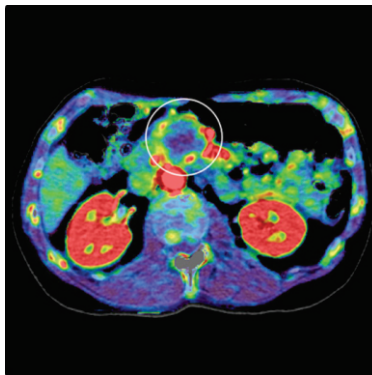
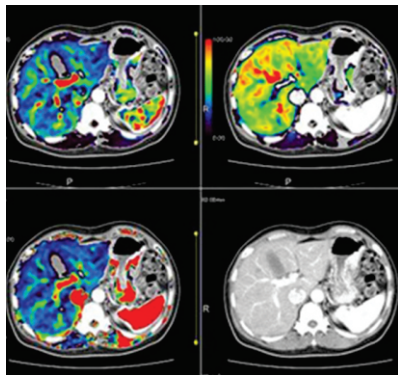
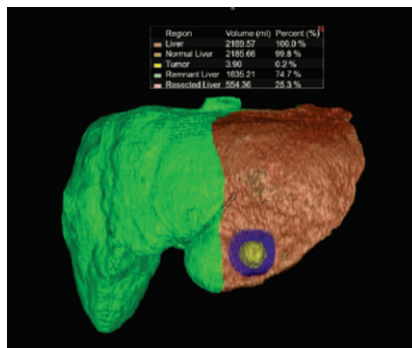
Lung Perfusion | Lung Nodule Evaluation (< 1cm) | Emphysema Quantification

Dual Energy Renal Stone Analysis | Quadriphasic Liver CT | Liver Fat Quantification



Oncology

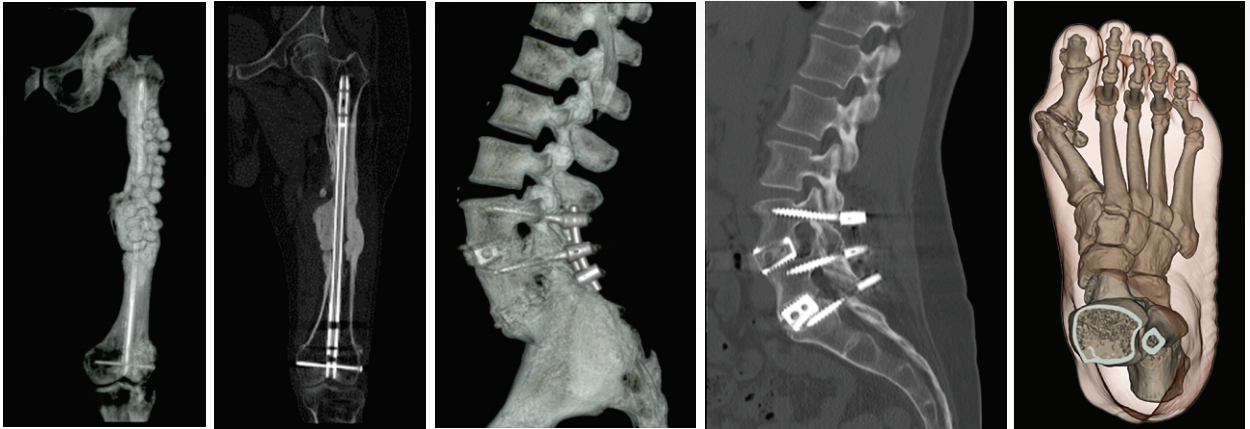
- ▶ Tumor Perfusion Maps
- ▶ Functional Imaging
- ▶ Liver & Vascular segmentation
- ▶ Volume Fusion Support
- ▶ RECIST assessments to monitor tumor response to treatment



MusculoSkeletal

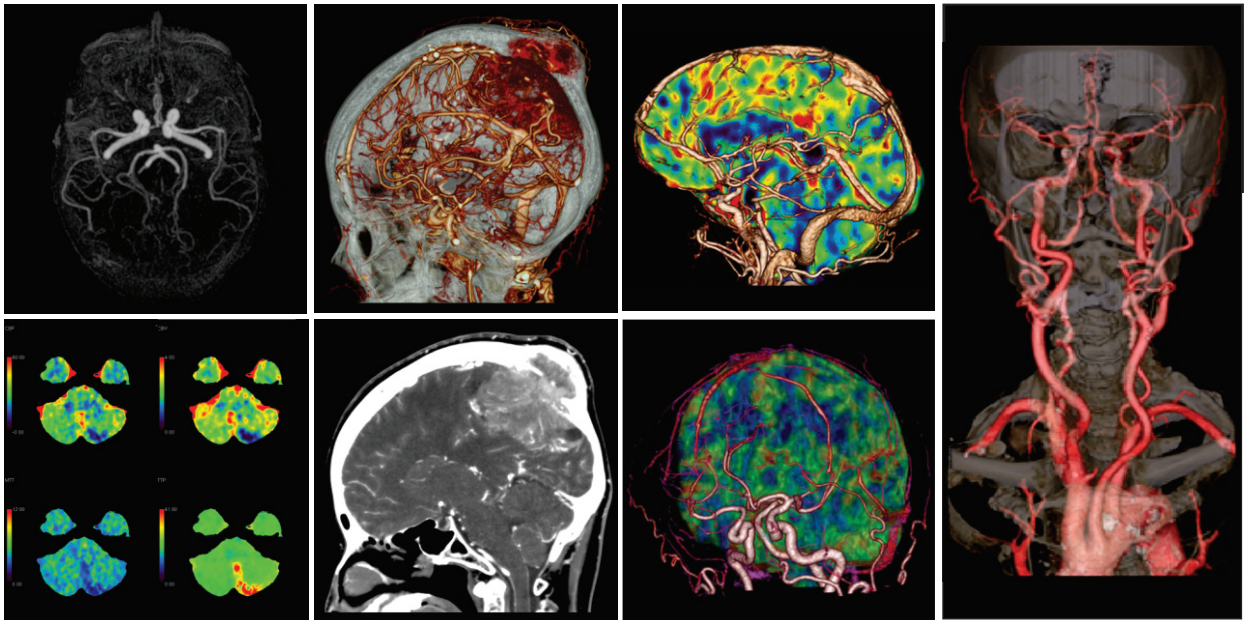
Kinematic 4D CT provides movie like CT of small joint movement like Wrist, TMJ etc.

SEMAR : Metal artifact reduction software makes it possible to see bone clearly without artifacts with implant insitu.

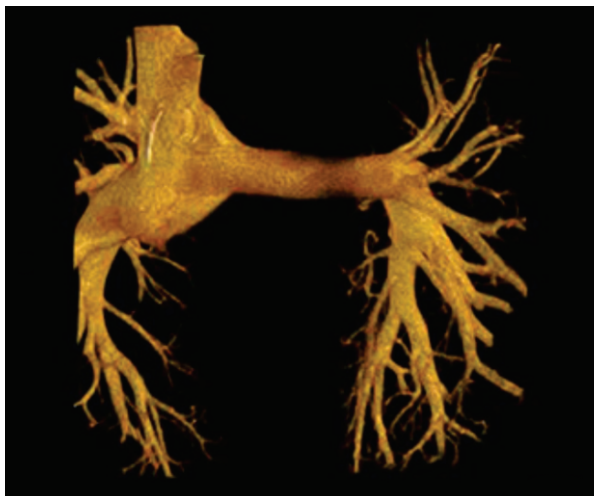
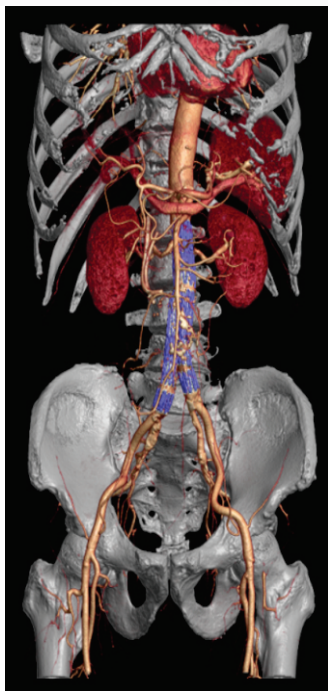


Head & Neck

Neuro DSA | Brain Angio | Brain Perfusion

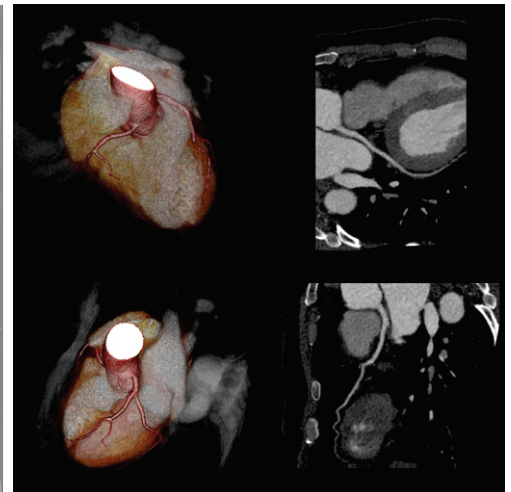
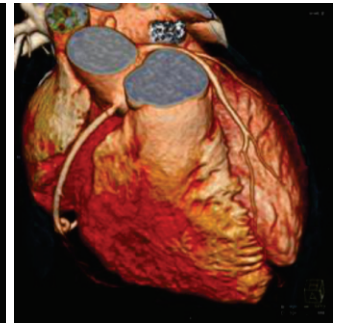
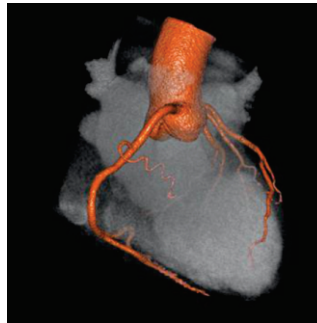
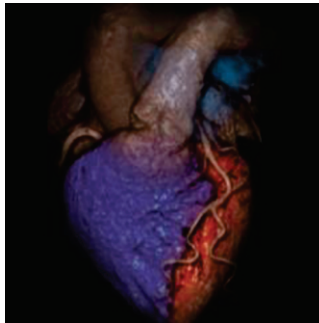
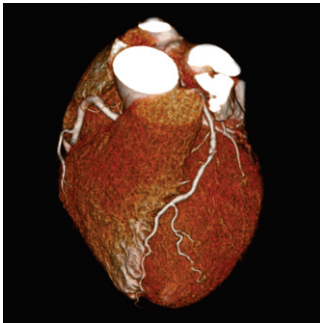
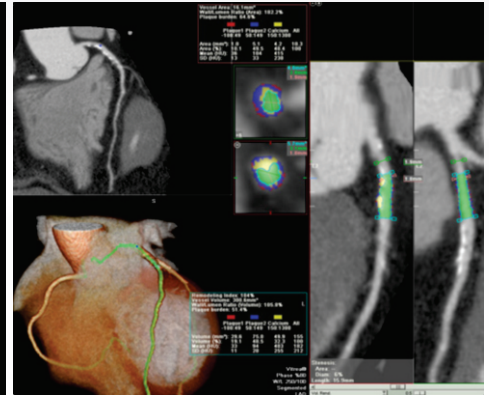
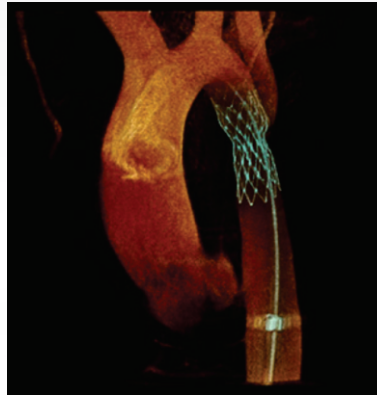


Body Angiography



Cardiac CT

- ▶ VScore for Calcium Scoring
- ▶ Coronary Angiographies
- ▶ Cardiac Functional Analysis
- ▶ Sure Plaque Evaluation
- ▶ TAVR Planning
- ▶ Endovascular Stent Planning



About Super Scan

Super Scan was started by **Dr. Nipun Jindal** and **Dr. Ghanshyam Ardeshana** in the year 2007 with the sole objective of giving high quality radiology services and definitive diagnosis to the patients. They have always been the 1st to get the best and latest technological advancements in radiology to the city of Surat. Their journey started with

1st 16 slice CT scan system in Surat - 2004

Another 16 Slice CT scan system in Surat - 2007

1st 3T MRI system in Surat - 2014

Now they introduce Gujarat's 1st 160 Slice Dual Energy CT Scan system to Surat. Infact it is technologically the highest level of CT Scan system among any private imaging centre of Gujarat.

Their vision is to provide super specialized services even in the field of radiology. They are a large team of radiologists working either on specific modalities or specialize in organ specific imaging.

Facilities

3T MRI | 160 Slice Dual Energy CT Scan | USG | 3D/4D Sonography | Color Doppler | Digital X-Ray
OPG | Contrast Procedures | Mammography | Interventional Radiology | Tele Radiology | 2nd Opinions

Team Super Scan

Dr. Ghanshyam Ardeshana

(DMRD & I)

+91 98250 45721

Dr. Krunal Baldaniya

(MD)

+91 94094 71823

Dr. Jainesh Dodia

(MD)

+91 97260 07726

Dr. Nipun Jindal

(MD, DNB, DMRE, PDCC)

+91 93747 35115

Dr. Rucha Sheth

(MD)

+91 98250 54159

Dr. Jignesh Makwana

(MD)

+91 98796 79662

Dr. Ketan Thummar

(MD)

+91 97242 34770

Mr. Kalpesh Kannaujiya

Chief Admin B.Sc. MBA

+91 99980 72244



Majura Gate Branch :

Leela Health Care, Majura Gate, Surat.

Ph : +91 (261) 246 0606, 246 0999, 246 4000

Lal Darwaja Branch :

Resham Bhavan, Lal Darwaja Station Road, Surat.

Ph. : +91 (261) 245 3388, 245 4488